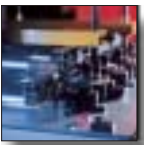




www.oemmespa.com



AS 221 GA

THERMAL BREAK PROFILE ASSEMBLY UNIT





Clamping system

8 driven disc shafts with automatic adjustment of the disc closing load depending on any slight profile deformation.

Horizontal simultaneous movement of discs with decimal adjustment indicated on display.

Pair of adjustable compensation discs for profiles horizontal linearity correction.

Possibility of choice among 3 types of discs:

kit 4020127 - kit 4020147 - kit 4020169



Guide system

Quick change upper and lower sliding rollers made of not abrasive material, which allow to support also not perfectly straight profiles thanks to the structural flexibility.

Upper rollers are provided with both a mechanical and an automatic load adjustment according to any small deformation of the profile.

Vertical simultaneous movement of upper rollers with decimal adjustment indicated on positioner.

Adjustable compensation rollers for profiles vertical linearity correction.

Idle conveyor rollers for easier profile loading.

Safety device

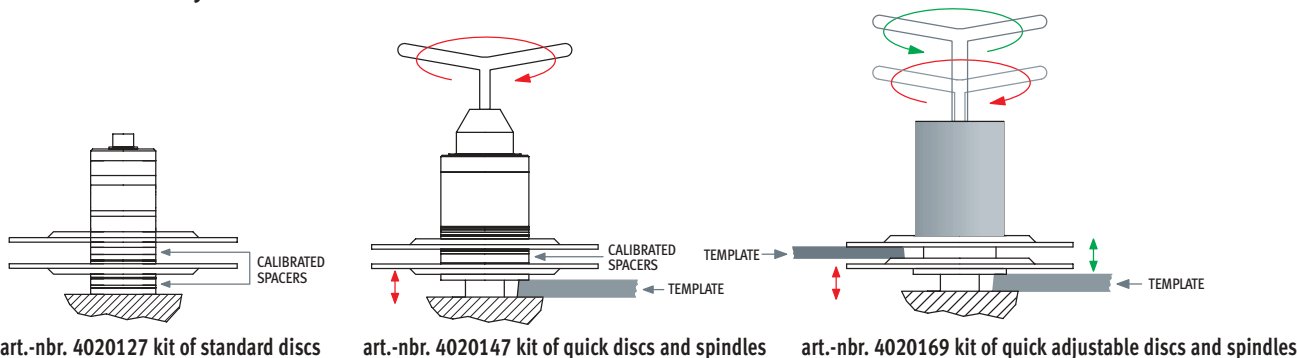
Servo-assisted front protection gate with safety device on opening.

Flap door on the rear side with safety device on opening.

Direction of movement changeable only at low speed.

Electrical and pneumatic setting, including emergency stop system for connection to loading and unloading roller conveyors.

Kit of assembly discs



Technical details

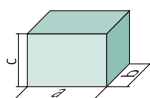
- Two-speed three-phase motor 0.7 - 1.1 Kw – 400 V – 50Hz
- Forward-reverse bar control
- Operating pressure : 7 bar
- Bar feed speed : min. 11.1 m/min – max 22 m/min
- Working capacity (dimensions of profile) : min. width 3 mm – max 246 mm
min. height 34 mm – max 250 mm
- Assembly discs diameter: 175 mm
- Assembly discs adjustment by means of a single control device, equipped with a decimal display; every disc is provided with an independent device for the fine adjustment
- Vertical guide roller adjustment by means of a single control device, equipped with decimal positioner and pneumatic damper for slight differences among profiles
- Profile twisting correction: +/- 2 mm by eccentric roller
- Machine overall dimensions: 1410 mm (a) x 1180 mm (b) x 1580 (c)
- Machine weight: 1050 Kg

Standard equipment

- Standard lower roller kit in polymer for profile support
- Standard upper roller kit in polymer for profile calibration
- Set-up drawings for each profile
- Installation, operation and maintenance manual
- Service spanners

Accessories on request

- Kit of assembly discs (by choice among article-nbr. 4020127, 4020147, 4020169)
- Special lower roller kit in polymer for profile support
- Special upper roller kit in polymer for profile calibration
- Side profile support



Export Department
Via F. L. Ferrari, 23
44100 FERRARA - ITALY
Tel. +39.0532.777418
Fax +39.0532.777477
sales@oemmespa.com

Sales office Italy
Via Cavallotti, 16
42010 REGGIO EMILIA - ITALY
Tel. 0522.271275
Fax 0522.923879
vendite@oemmespa.com

Head office and Production
Via F. L. Ferrari, 23
44100 FERRARA - ITALY
Tel. 0532.777411
Fax 0532.777444
info@oemmespa.com